

COL6A1 Antibody (N-term)
Purified Rabbit Polyclonal Antibody (Pab)
Catalog # AP6587a**Specification**

COL6A1 Antibody (N-term) - Product Information

Application	FC, WB, IHC-P,E
Primary Accession	P12109
Other Accession	Q04857
Reactivity	Human
Predicted	Mouse
Host	Rabbit
Clonality	Polyclonal
Isotype	Rabbit IgG
Calculated MW	108529
Antigen Region	48-77

COL6A1 Antibody (N-term) - Additional Information**Gene ID** 1291**Other Names**

Collagen alpha-1(VI) chain, COL6A1

Target/Specificity

This COL6A1 antibody is generated from rabbits immunized with a KLH conjugated synthetic peptide between 48-77 amino acids from the N-terminal region of human COL6A1.

Dilution

FC~~1:10~50

WB~~1:1000

IHC-P~~1:10~50

E~~Use at an assay dependent concentration.

Format

Purified polyclonal antibody supplied in PBS with 0.09% (W/V) sodium azide. This antibody is prepared by Saturated Ammonium Sulfate (SAS) precipitation followed by dialysis against PBS.

Storage

Maintain refrigerated at 2-8°C for up to 2 weeks. For long term storage store at -20°C in small aliquots to prevent freeze-thaw cycles.

Precautions

COL6A1 Antibody (N-term) is for research use only and not for use in diagnostic or therapeutic procedures.

COL6A1 Antibody (N-term) - Protein Information

Name COL6A1

Function Collagen VI acts as a cell-binding protein.

Cellular Location

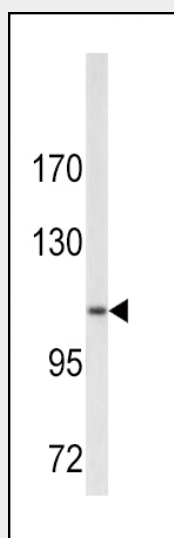
Secreted, extracellular space, extracellular matrix

COL6A1 Antibody (N-term) - Protocols

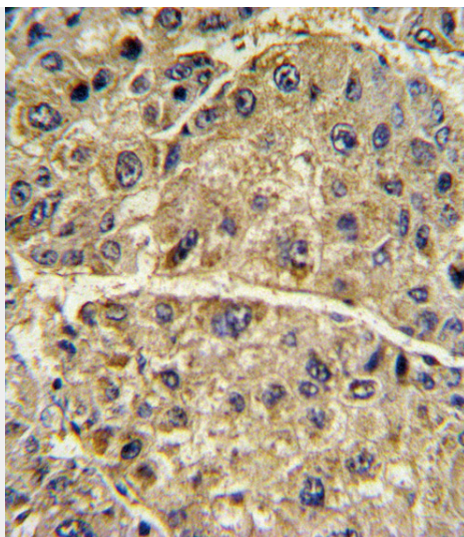
Provided below are standard protocols that you may find useful for product applications.

- [Western Blot](#)
- [Blocking Peptides](#)
- [Dot Blot](#)
- [Immunohistochemistry](#)
- [Immunofluorescence](#)
- [Immunoprecipitation](#)
- [Flow Cytometry](#)
- [Cell Culture](#)

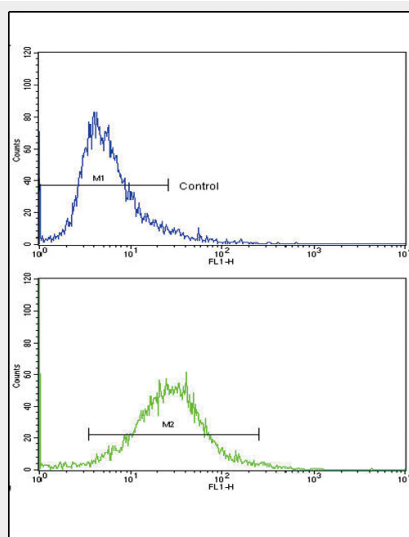
COL6A1 Antibody (N-term) - Images



Western blot analysis of COL6A1 antibody (N-term) (Cat. #AP6587a) in A2058 cell line lysates (35ug/lane). COL6A1 (arrow) was detected using the purified Pab.



Formalin-fixed and paraffin-embedded human hepatocarcinoma with COL6A1 Antibody (N-term), which was peroxidase-conjugated to the secondary antibody, followed by DAB staining. This data demonstrates the use of this antibody for immunohistochemistry; clinical relevance has not been evaluated.



Flow cytometric analysis of 293 cells using COL6A1 Antibody (N-term)(bottom histogram) compared to a negative control cell (top histogram). FITC-conjugated goat-anti-rabbit secondary antibodies were used for the analysis.

COL6A1 Antibody (N-term) - Background

The collagens are a superfamily of proteins that play a role in maintaining the integrity of various tissues. Collagens are extracellular matrix proteins and have a triple-helical domain as their common structural element. Collagen VI is a major structural component of microfibrils. The basic structural unit of collagen VI is a heterotrimer of the alpha1(VI), alpha2(VI), and alpha3(VI) chains. The protein COL6A1 is the alpha 1 subunit of type VI collagen (alpha1(VI) chain). Mutations in the genes that code for the collagen VI subunits result in the autosomal dominant disorder, Bethlem myopathy.

COL6A1 Antibody (N-term) - References

Martoni,E., Hum. Mutat. 30 (5), E662-E672 (2009)

Kim,T.H., J. Rheumatol. 35 (9), 1849-1852 (2008)

Fujita,A., Genet. Mol. Res. 7 (2), 371-378 (2008)

COL6A1 Antibody (N-term) - Citations

- [Basement membrane-like structures containing NTH \$\alpha\$ 1\(IV\) are formed around the endothelial cell network in a novel in vitro angiogenesis model.](#)
- [Type VI collagen \$\alpha\$ 1 chain polypeptide in non-triple helical form is an alternative gene product of COL6A1.](#)